

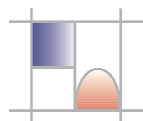
DRAFT DETAILS
Estimated completion date: November 2010

88-92 Beswick Avenue
Bournemouth, BH10 5AS

We are pleased to offer this purpose built development consisting of ten, new, 3 bedroom, semi-detached houses.



This development is located in Ensburry Park, close to local amenities and providing easy access to good transport links.

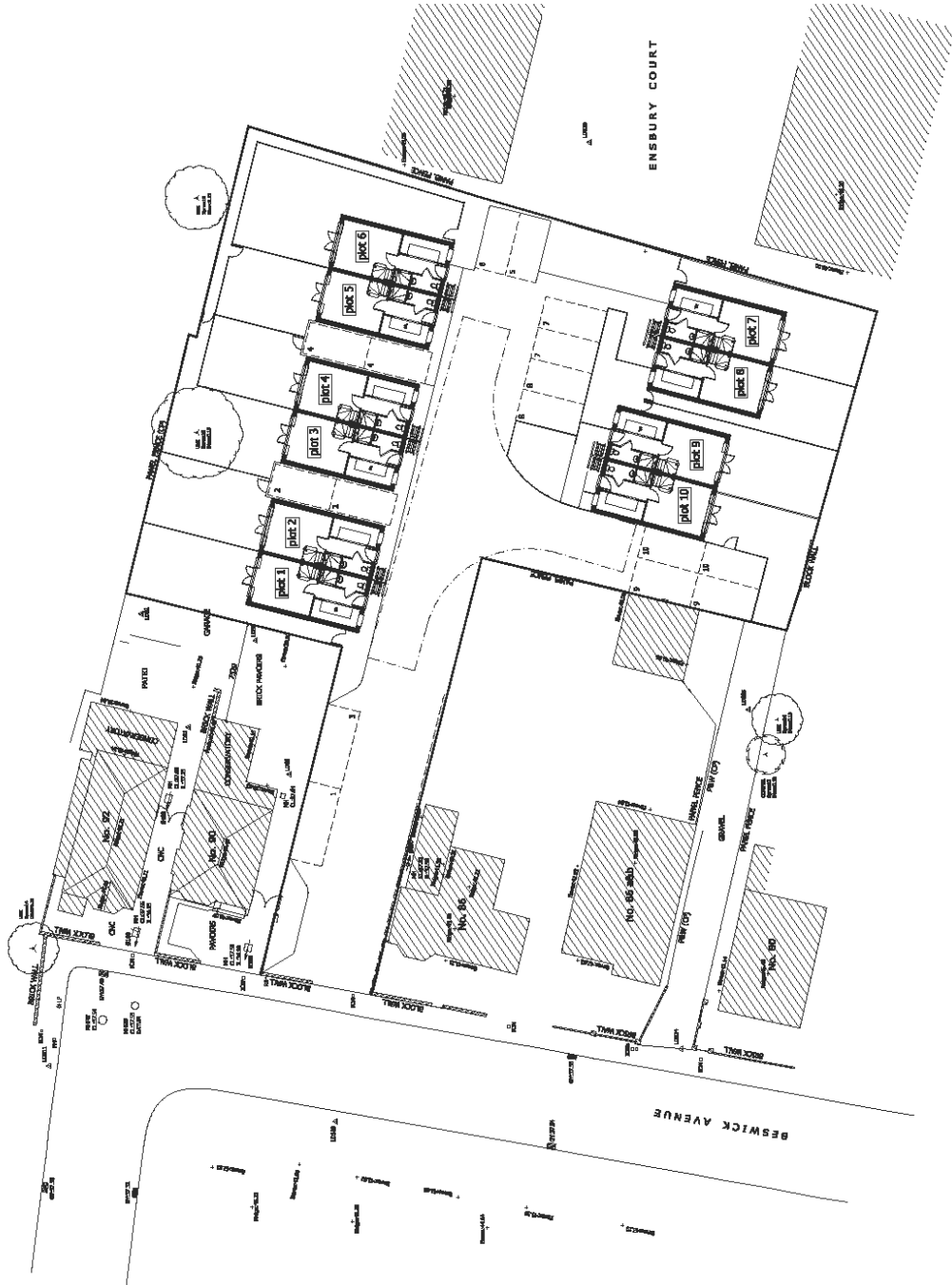


Holton Homes

Suite 3 Pine Court, 36 Gervis Road
Bournemouth, Dorset, BH1 3DH

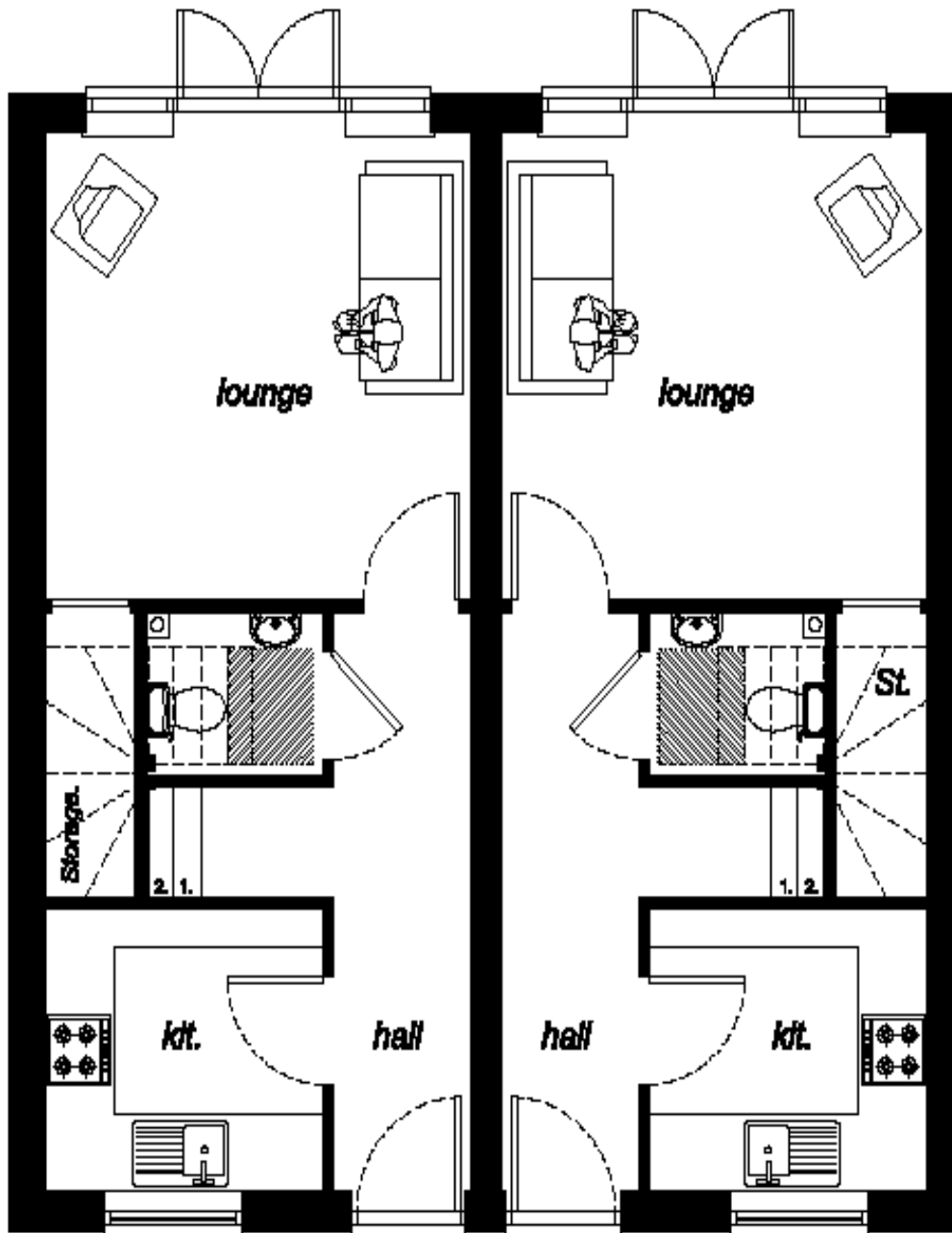
Tel: 01202 310200

SITE PLAN



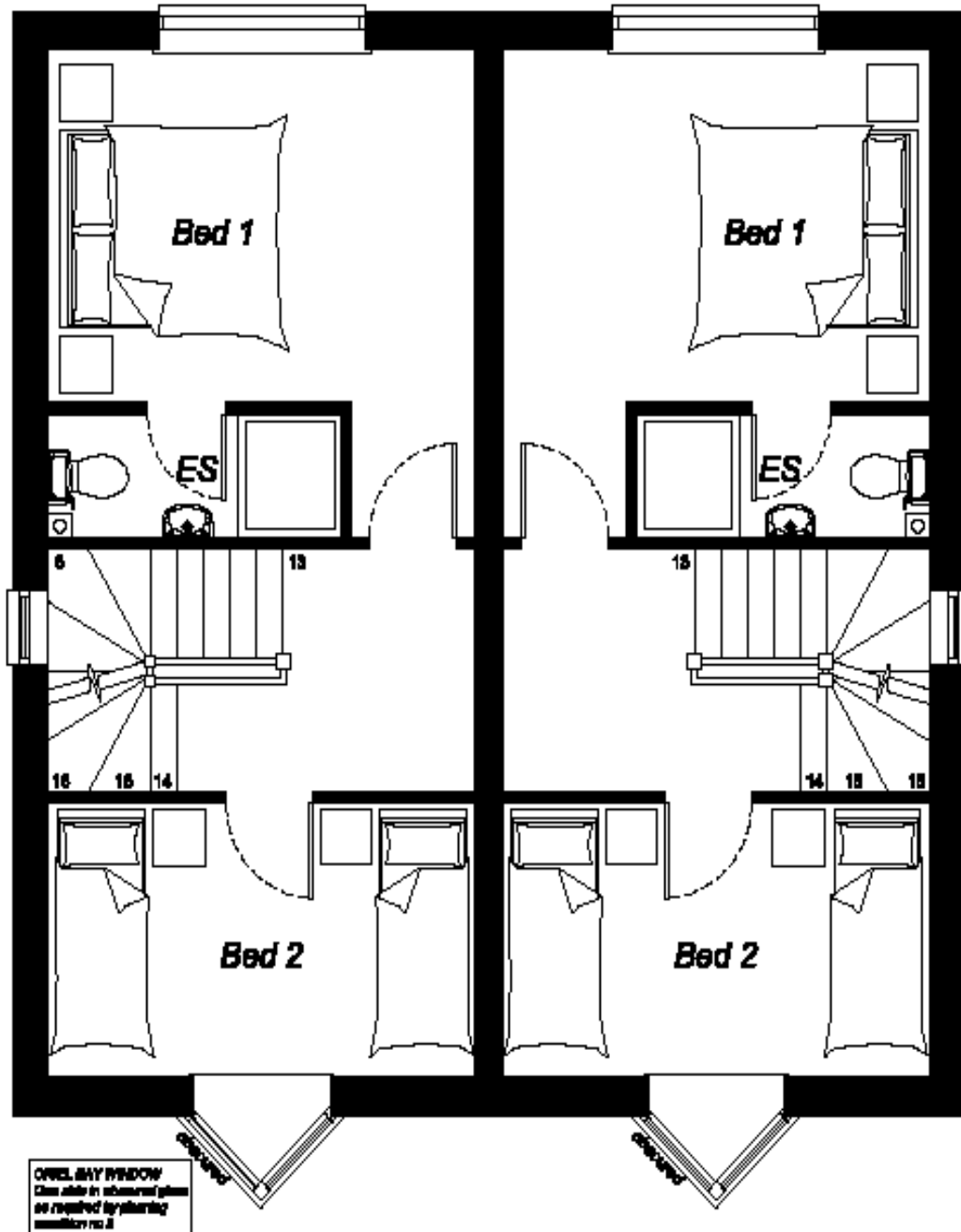
Note: Building sites can be dangerous. Holton Homes are happy to meet prospective purchasers on the site and discuss requirements with them. However, when visiting please take sensible precautions and do not allow children to wander unaccompanied. Holton Homes reserve the right to alter the specifications, layout and elevation of any of the units without prior notice.

FLOOR PLANS : UNITS 1-10 Ground Floor



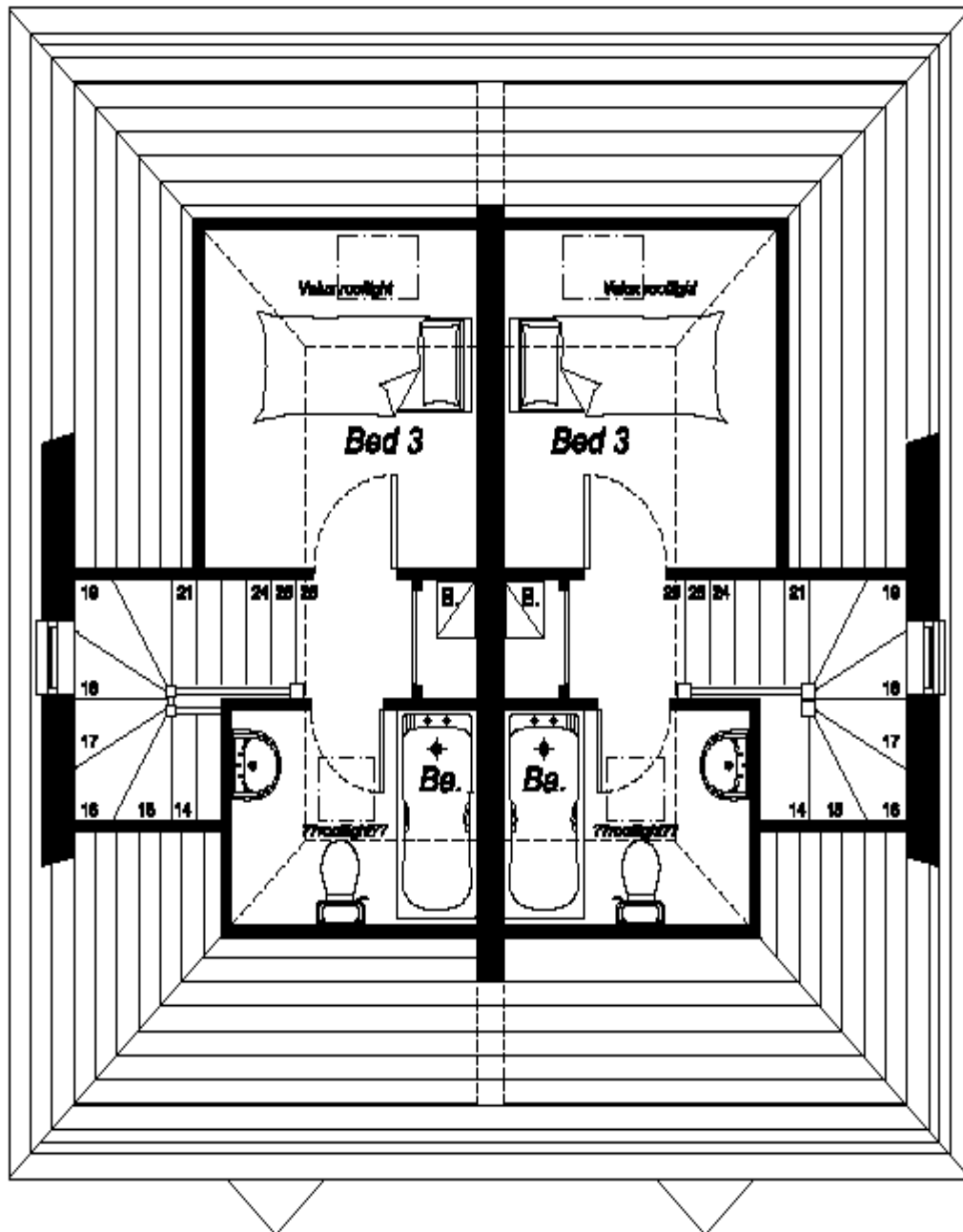
NB. Holton Homes reserve the right to amend plan/elevations to suit the requirements of the local authority

FLOOR PLAN : UNITS 1-10 First Floor



NB. Holton Homes reserve the right to amend plan/elevations to suit the requirements of the local authority

FLOOR PLAN : UNITS 1-10 Second Floor



NB. Holton Homes reserve the right to amend plan/elevations to suit the requirements of the local authority

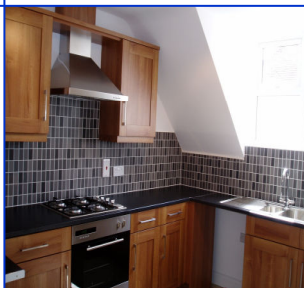
MEASUREMENTS

PLEASE NOTE MEASUREMENTS ARE TAKEN FROM THE WIDEST POINT
THE MEASUREMENTS ARE APPROXIMATE AND SHOULD BE USED AS A GUIDE ONLY

PLOTS 1-10

LOUNGE	3715 X 3658	12'2" x 12'0"
KITCHEN	2425 X 2208	8'0" X 7'3"
BED 1	3715 X 2848	12'2" X 9'4"
BED 2	3715 X 2208	12'2" X 7'3"
BED 3	2748 X 2525	9'0" X 8'3"

SPECIFICATION



KITCHEN

Fitted kitchens with choice of Walnut shaker/Cream/Beige Gloss shaker style units or just simple plain white shaker, with matching work surfaces *

- Stainless steel Oven, Hob and Extractor
- Ceramic tiling to underside of wall units
- Stainless steel sink with chrome monobloc taps
- Ceiling mounted halogen light

BATHROOM

Fitted modern white bathroom suite comprising panel enclosed bath, pedestal wash hand basin, low level w.c

- Choice of ceramic wall tiles *subject to stage of construction
- Full height tiling to bath area and splash back tiling to basin
- Monobloc/twin lever taps to bath
- Shower screen



FINISHING ELECTRICAL TOUCHES

- Double socket outlets throughout
- BT AND TV point to lounge and bedroom 1
- Smoke detector to hallway

HEATING & PLUMBING

- Gas central Heating
- Thermostatically controlled radiators
- Heated towel rail to bathroom

DECORATION

- Smooth finish ceilings emulsion painted white
- Walls– finished in white emulsion
- Internal woodwork– finished in white gloss
- 6 panel internal doors with chrome door furniture

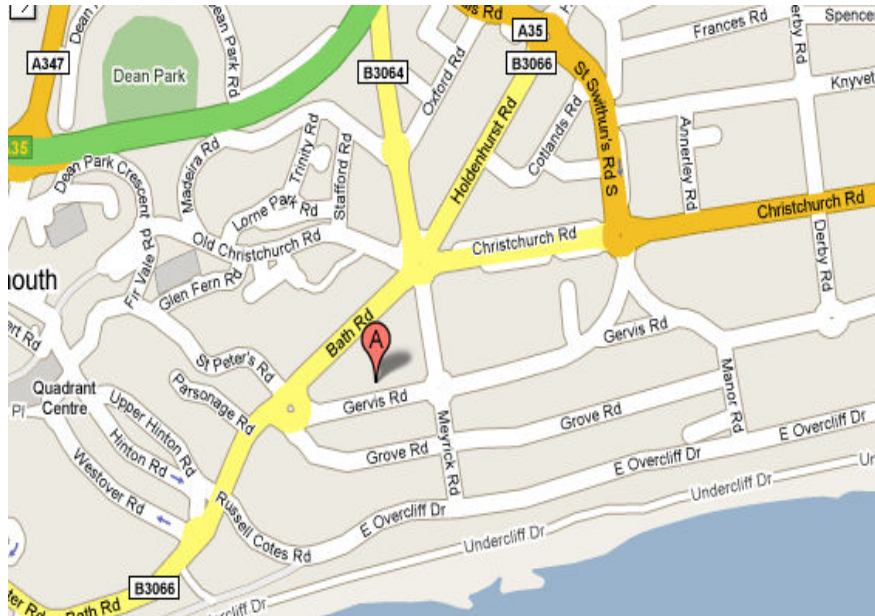
* Subject to stage of construction

* Subject to stage of construction

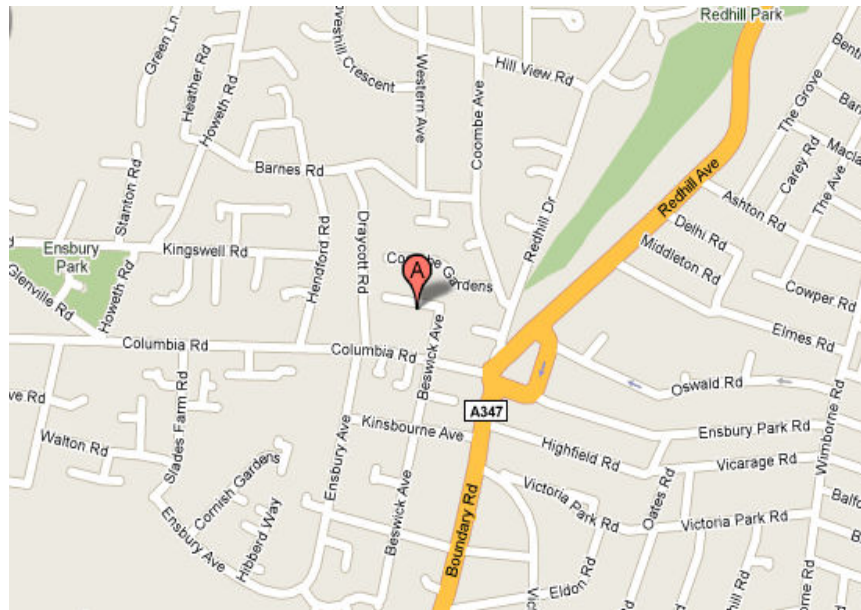
PLEASE NOTE; whilst this is the intended specification, it may be that for reasons beyond the seller's control, for example the requirements of Building Regulations, variations may have to be made to the specification.

Wherever possible we shall attempt to draw such changes to the attention of prospective purchasers, and, therefore, although this specification is provided in good faith no warranty can be offered that the specification will remain completely accurate.

HOW TO FIND US... HOW TO FIND THE PROPERTY...



*Holton Homes – Suite 3, Pine Court, 36 Gervis
Road, Bournemouth, Dorset, BH1 3DH*



*88-92 Beswick Avenue, Bournemouth
Dorset, BH10 5AS*

CONTACT- Sales

Sandra Dayman - sandra.dayman@holtonhomes.co.uk
Carly Moir - carly.moir@holtonhomes.co.uk

www.holtonhomes.co.uk
Sandra Mobile: 07900 433924